



Student Services

Mental Health & Safety

March 2025



Focus Areas

Because of these beliefs, the 2024-2029 Strategic Plan is organized around three focus areas. Each focus area has three long-term aims that guide our direction.

Student Success in School

1. **Achievement:** Ensure each student is academically successful and fully prepared to respond to an ever-changing world.
2. **Equity:** Ensure each student and staff member receives the necessary resources to meet their full potential.
3. **Well-Being:** Ensure the social-emotional well-being of each student and staff member.

Student Success in Life and Beyond School

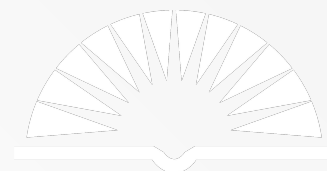
1. **Real World/ Relevance:** Each student will have the opportunity to connect their learning to relevant and real-world experiences.
2. **Personalization:** Each student will have access to various pathways and pacing aligned with their preferences and needs.
3. **Vision:** Each student will grow toward achieving a Parkway Endorsement (achieving the Vision for a Learner or Market Value Assets).

Providing the Resources for Student Success

1. **Facilities:** Ensure Parkway students and staff have the facilities and physical resources needed to meet both present and future needs.
2. **Staffing:** Ensure all operations and certified staff positions are staffed with highly qualified personnel to meet critical needs.
3. **Operations:** Honor and address student concerns related to nutrition, facilities, and transportation.

Strategic Initiatives

Proactively address social-emotional well-being through a focus on relationships, trust, community, welcoming learning environments.

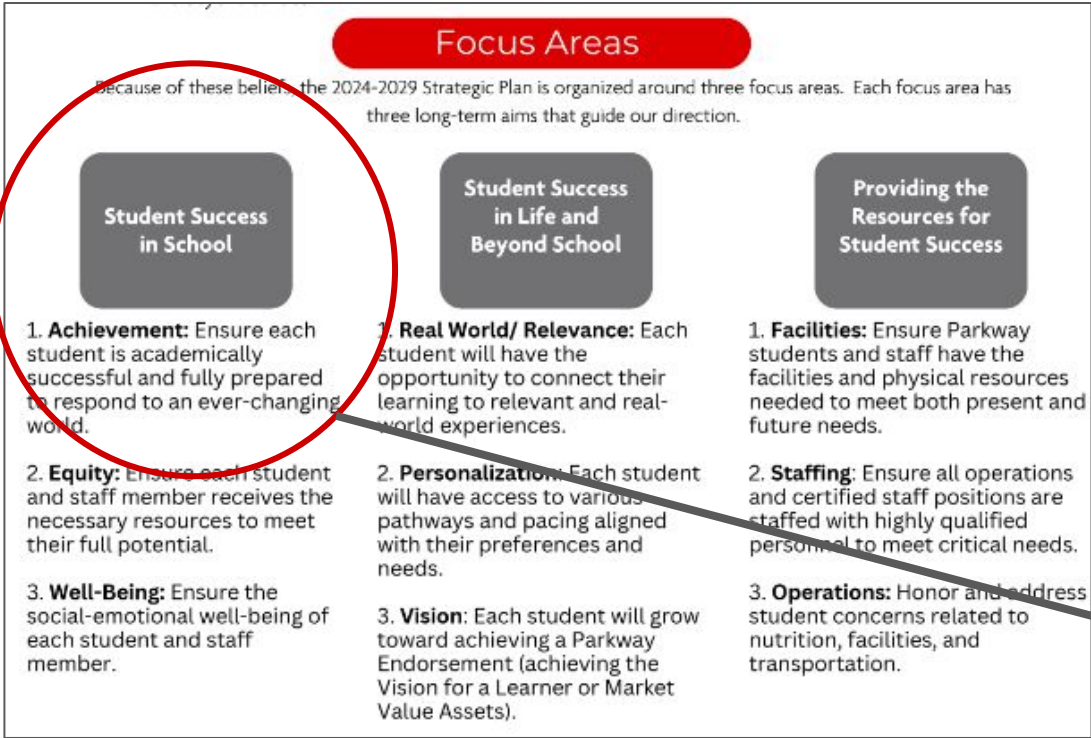


2024-2029 Plan

Vision




Focus Areas (Success in School)



Goal

S.5 Proactively address social-emotional well-being by focusing on relationships, trust, community, and welcoming learning environments. This includes establishing collaborations with community partners to ensure student needs are met within and beyond the school setting.

Today's Discussion

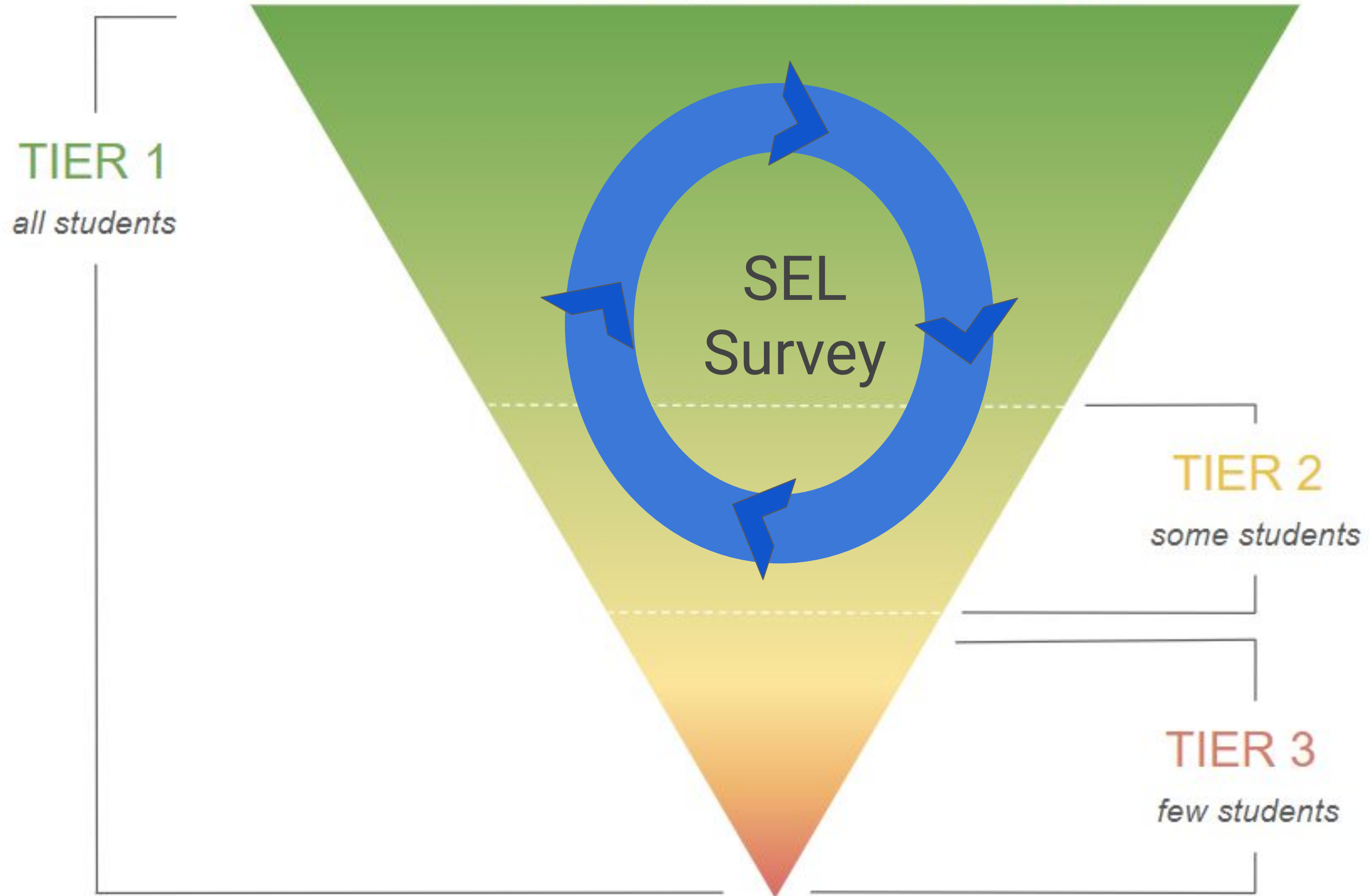
- Prevention
 - MTSS/Universal Survey
 - Suicide Screener & Assessment
 - Threat Assessment
 - Student Wellness Program
 - Intervention
 - Mental Health Specialists
 - Children's Service Fund
- 

Prevention Services



MTSS and Universal SEL Survey

Academic, SEL, and Behavior



Surveys

- Student competency and well-being
- Student supports and environment
- Teacher perception of student

Data from SEL Survey

- Most of the data will result in Tier 1 interventions
- School staff would need to gather more data before a Tier 2 or Tier 3 problem could be identified.
- Counselors and teachers will be the primary interventionists responding to survey data.

Well Being

SECONDARY

ELEMENTARY

Likert Scale Questions	Positive Responses
Teachers care about the students at my school.	93.3%
I am treated fairly by school employees.	90.4%
I get the help I need at school.	90.2%

Likert Scale Questions	Positive Responses
Teachers care about the kids at school.	98.4%
I get the help I need at school.	94.9%
The things I'm learning in school are important to me.	93.4%

Opportunities for Growth

68.4%

SECONDARY

Students at my school
care for one another.

81.3%

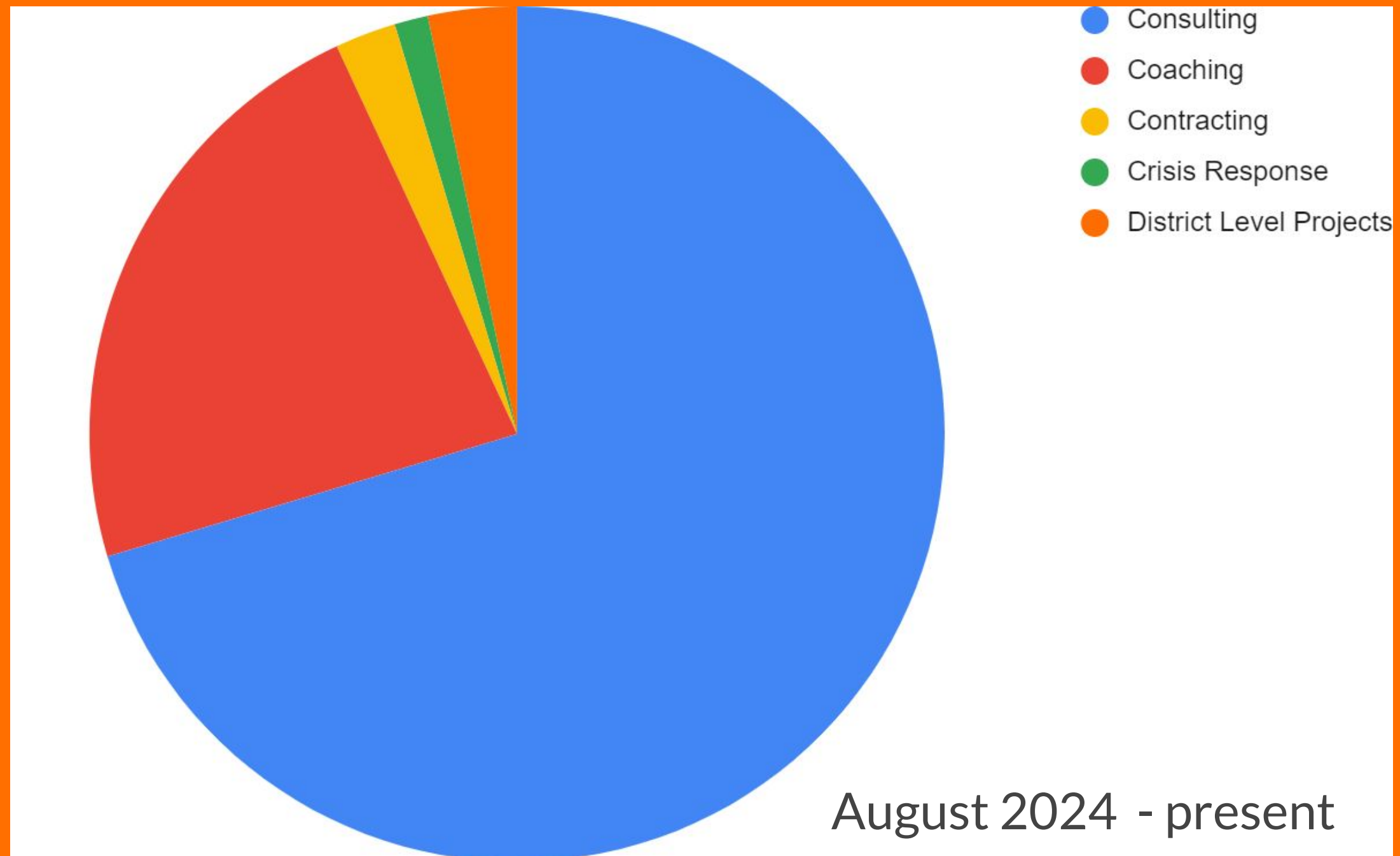
ELEMENTARY

I get to do the same things
as other kids at my school.

Parkway Social-Emotional Behavior Specialist

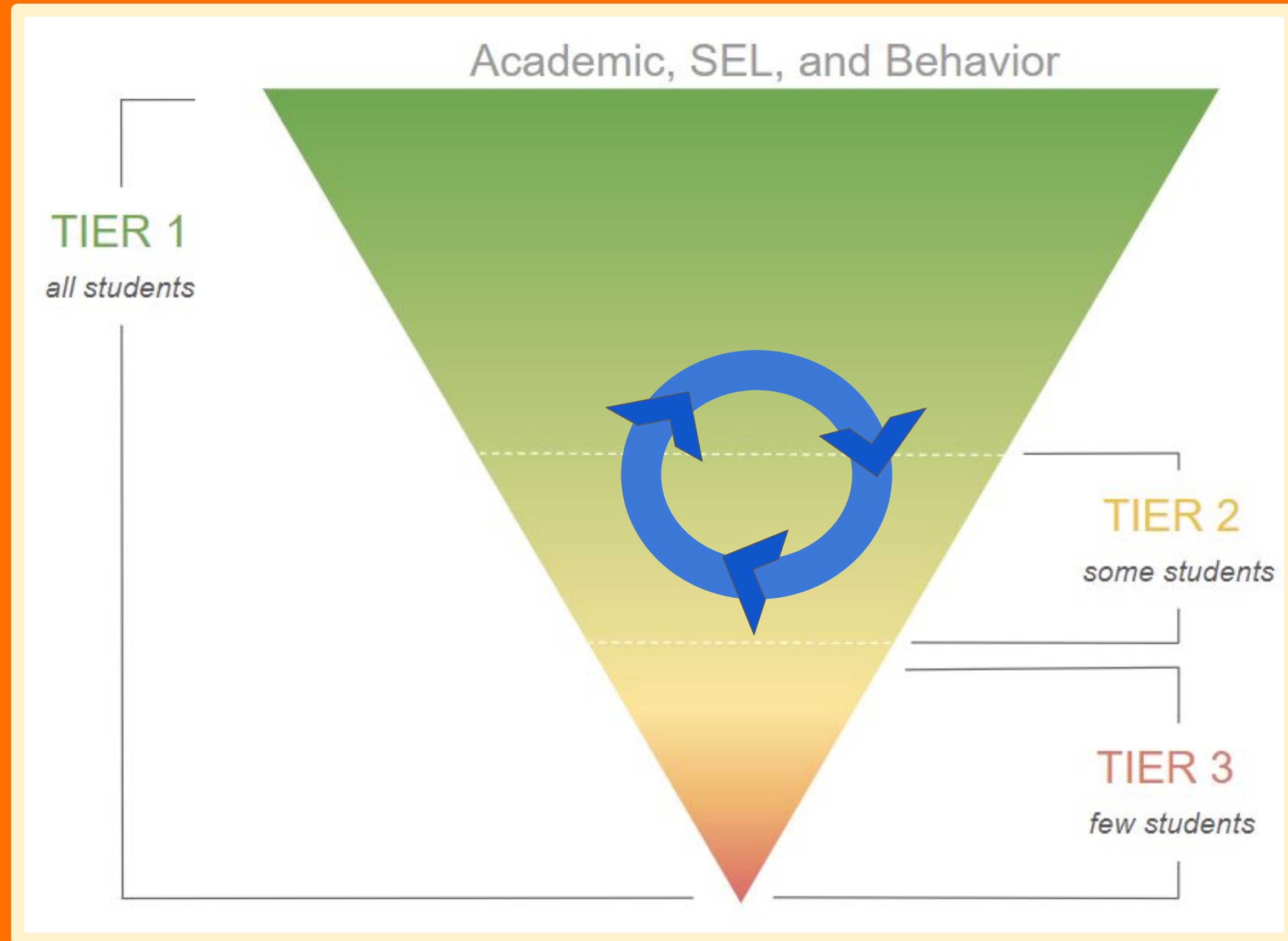
Area of Service	Service description
Consulting	Consulting work supports the processes and structures of school buildings as well as district- level work and committees.
Coach & Support	Coaching focuses on skill building based on the individual needs of teachers and students.
Contract	Contracting is providing 1 on 1 intensive support for a student or teacher who requires Tier 3 behavioral supports, utilizing a Teacher Assistant as needed.

SEBS Areas of Service



Suicide Screener and Assessment

Parkway School Counselors



Suicide Screener (Administered by School Counselors)

Counselor asks
three questions.

Counselor
asks...

Counselor decides whether
the student needs a full
assessment or needs to
work on the problem at
hand.

Counselor
decides...

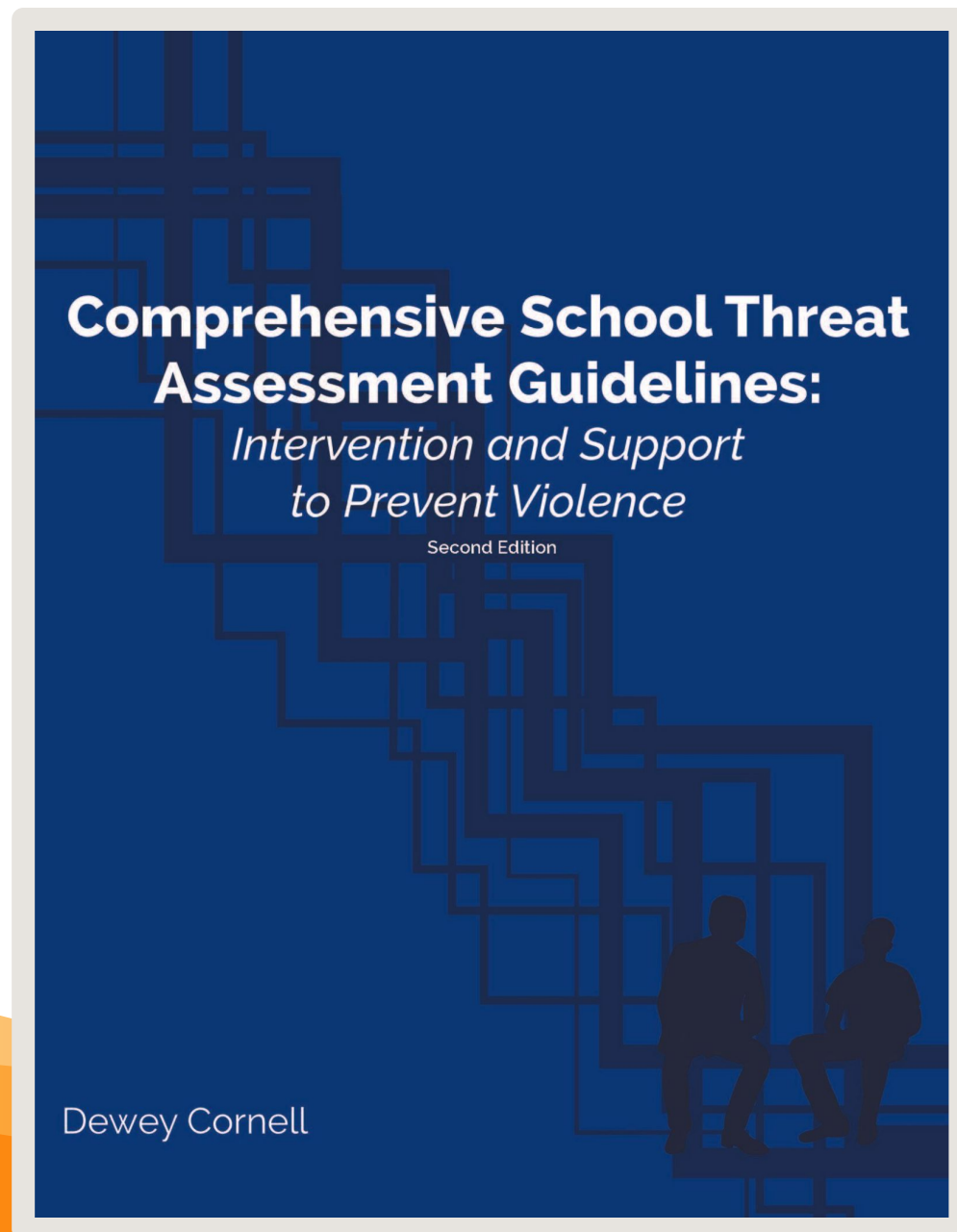
Suicide Assessment

(Administered by Mental Health Specialist)

- 
- Ideation Severity
 - Ideation Intensity
 - Behaviors
 - Lethality of Attempts
- 

Mental Health Specialist Recommendation and Follow-up

Student Threat Assessment & Intervention



RAPTOR[®]
TECHNOLOGIES

Additional Screeners

Mental Health Screeners

Proactive Presentations



Presentations by
Children's Service Fund
agencies through
Health class in
Grades 5-8 and 10.

Screeners



Mini-suicide screener at
the end of the
presentation.
Students who are flagged
meet with the school
counselor.

Student Wellness Program

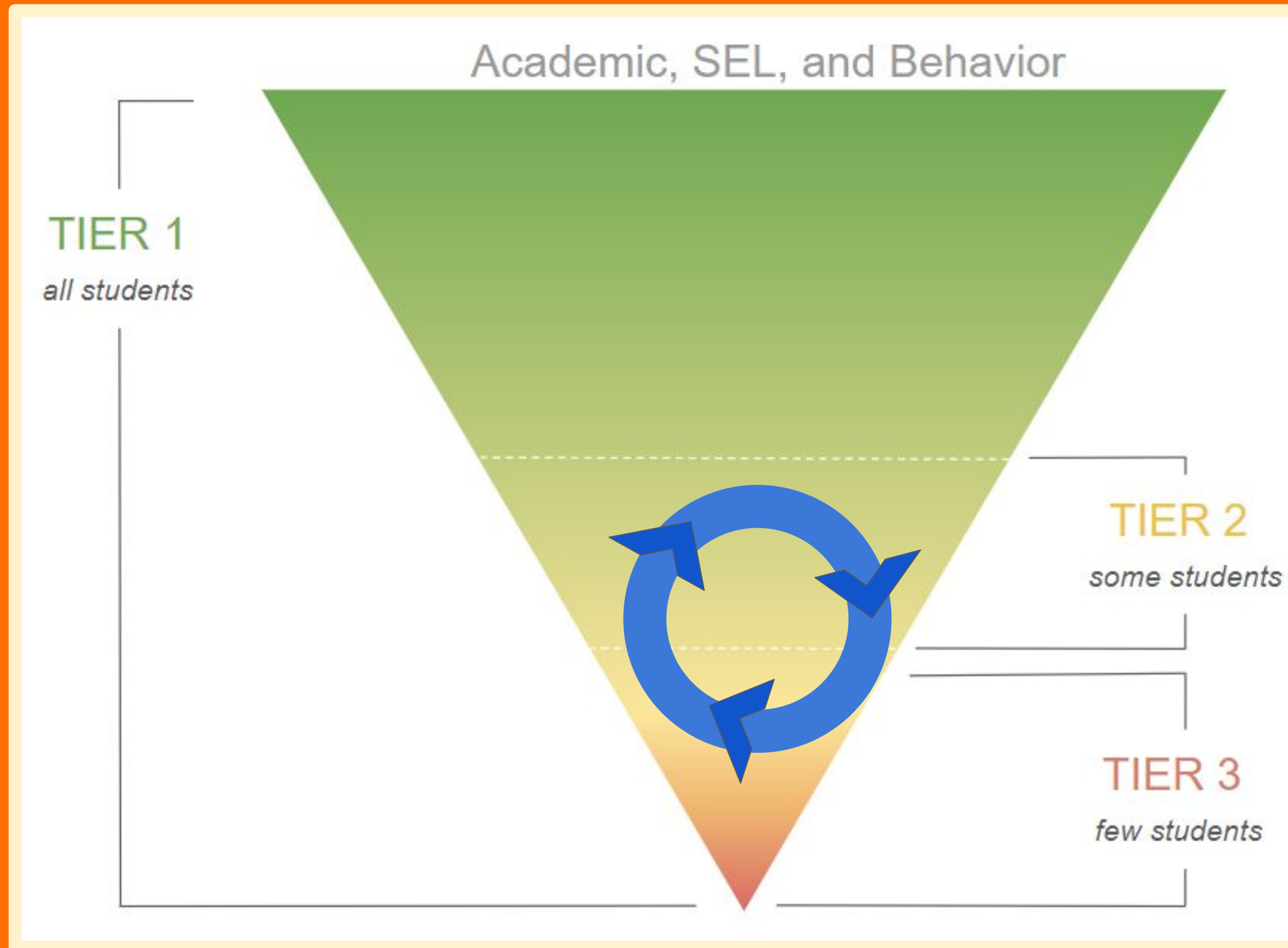


Parents can choose to
have their student take a
more in-depth broader
mental health screener
with Mental Health
America

Intervention Services



Parkway Mental Health Specialist



Parkway Mental Health Specialist

- 1 Mental Health Specialist in each elementary school
- 1 Mental Health Specialist in each middle & high school
- 3 Mental Health Specialists and a Lead MHS for secondary areas
 - The lead Mental Health Specialist oversees 5 Master Social Work Interns





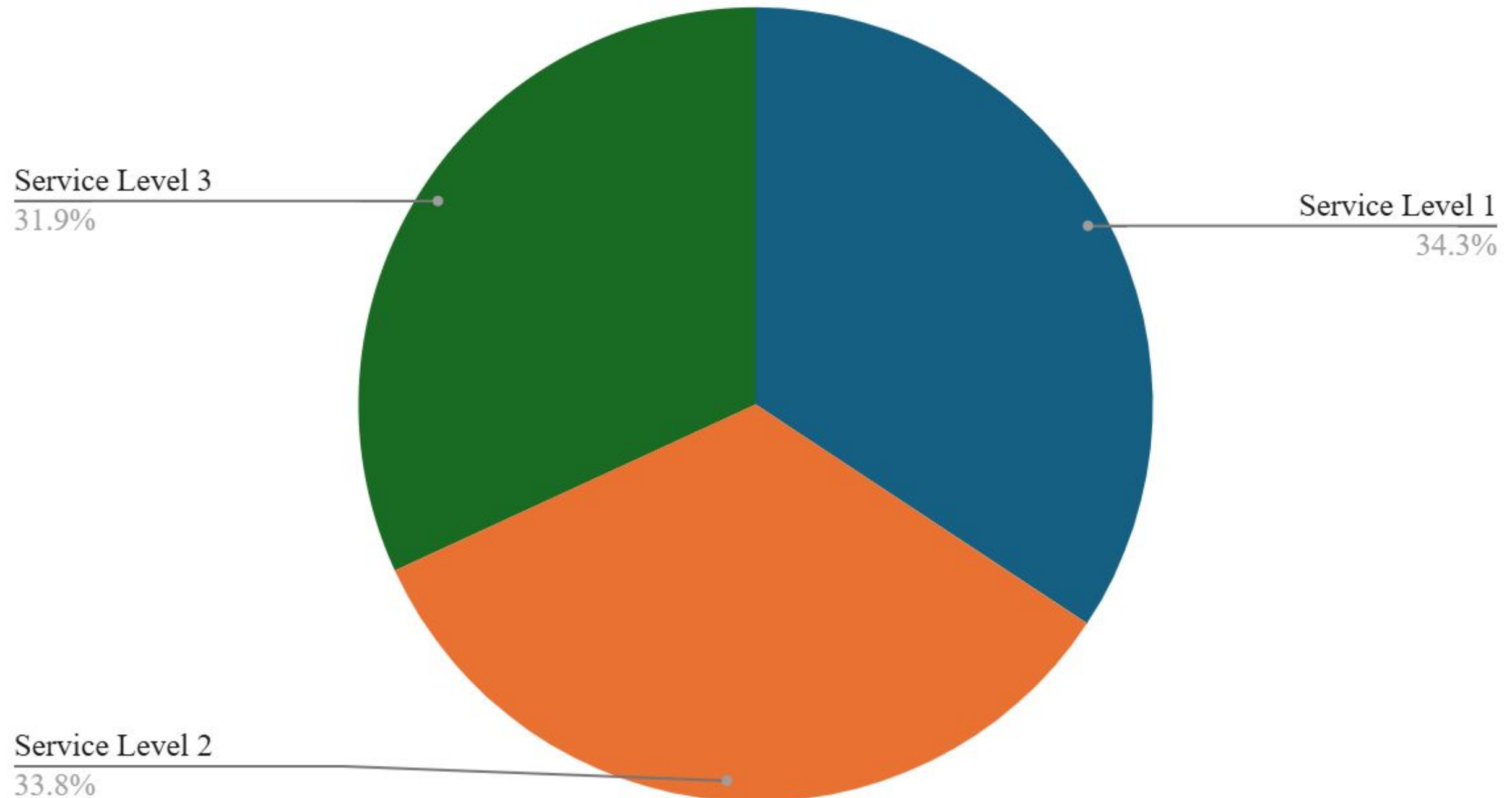
- 1 Mental Health Specialist in each elementary school
- 1 Mental Health Specialist in each middle & high school
- 3 Mental Health Specialists and a Lead MHS for secondary areas
 - The lead Mental Health Specialist oversees 5 Master Social Work Interns

Service Type (Level corresponds to IC Flagging)	Service description
Crisis Intervention (Level 1)	The MHS provides short-term, immediate assistance to those experiencing an acute or overwhelming situation. Examples: housing insecurity, verbal or physical disclosure of harm to self or others, and resource referrals.
Case Management (Level 2)	Utilizing a coordinated approach, the MHS provides supportive services through collaboration within the community and district. Examples: therapy and psychiatric services provided in the community, Student Wellness Program, family contact
Case Consultation (Level 2)	A collaborative process in which the MHS offers staff guidance, seeks input and allows for shared knowledge and perspectives, resulting in informed decisions. Example: PLC, Student Problem Solving
Wrap Around (Level 3)	Designing a holistic support system, the MHS will address potential needs in a strengths-based model utilizing numerous supportive services within the community and district.
Mental Health Therapy (Level 3)	The MHS provides longer-term, individual or group therapeutic support. Parent or guardian approval is required.

The Parkway Mental Health Specialists (MHS) provide targeted, intensive services (Tier 3) to students who are recommended through a multi-tiered system of support structure.

MHS Service Levels

Caseload by Service Level



Children's Service Fund Agencies

We partner with the following agencies from the Children's Service Fund to deliver classroom presentations, provide individual therapy, and small group therapy:

- BJC Behavioral Health
- CHADS Coalition
- Cornerstones of Care
- Jewish Family Services
- Kids in the Middle
- Lutheran Family and Children's Services
- NAMI Saint Louis
- Preferred Family Healthcare
- Saint Louis Counseling
- Youth In Need

Questions?

Thank

you!

